

Local Development Framework for Bradford

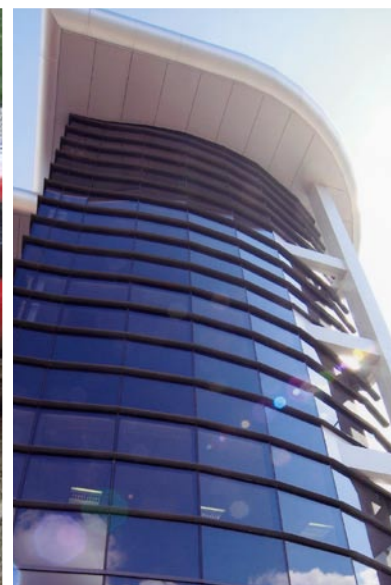
# Core Strategy

## Issues and Options

### Summary of Representations

#### Topic Paper 1: Introduction and Background, Initial Sustainability Appraisal and Engagement Plan

December 2007



City of Bradford MDC

[www.bradford.gov.uk](http://www.bradford.gov.uk)







## **LIST OF CONSULTEES WHO SUBMITTED COMMENTS ON TOPIC PAPER 1, THE INITIAL SUSTAINABILITY APPRAISAL AND/OR THE ENGAGEMENT PLAN**

1. Ben Rhydding Action Group
2. Government Office for Yorkshire and Humber
3. West Yorkshire Archaeology Advisory Service
4. Yorkshire Forward



## TOPIC PAPER 1: INTRODUCTION AND BACKGROUND

COMMENT	ORGANISATION
<b>GENERAL</b>	
<p>We are disappointed that in this section where it describes the district as being 2/3 open country, with the majority being Green Belt it also states that most farmland can be described as marginal. We believe that the Council should take the opportunity to recognise that there are areas of the district, mostly in valley bottoms, which contain the highest quality agricultural land. Often this is also Green Belt and in some cases includes farm, which have diversified into tourist and recreational arrears such as Horse Riding centres and stabling. As such these should be considered sacrosanct not only for such purposes but also to recognise that in the long term we cannot afford to lose any high quality agricultural land to other purposes. Just as Central government have begun to recognise that Energy Supplies from sometimes unstable regions in the rest of the world cannot always be relied upon the same must be recognised with regard to possible future food production.</p>	<p><b>Ben Rhydding Action Group</b></p>
<p>Topic Paper 1: Page 1, 1<sup>st</sup> para and paras 1.1 &amp; 1.12 – Subject to final RSS, may need to look beyond 2021; for housing, to accord with PPS3, will need to make provision for at least 15 years from adoption.</p> <p>Page 1, 3<sup>rd</sup> para and para 1.1– only DPDs in the LDF make up the development plan with RSS (ie not SPDs or other docs such as the SCI).</p> <p>Page 3, ‘What Happens Next?’, and paras 2.3 &amp; 2.4 – see comment under <u>Continuous Community Involvement</u>.</p> <p>Para 1.3 – Hull, East Riding, North Lincolnshire and North East Lincolnshire are unitary authorities.</p> <p>Para 1.11 – Inter-relationship between DPDs will need to be clarified when LDS is finalised.</p> <p>Para 1.23 – Will need updating to reflect latest position on RSS.</p>	<p><b>Government Office for Yorkshire and Humber</b></p>

## INITIAL SUSTAINABILITY APPRAISAL

COMMENT	ORGANISATION
<p>It is of serious concern that the historic environment does not appear to have been considered in the <b>Initial Sustainability Appraisal</b>. (see table 3 draft plan objectives assessed against draft sustainability appraisal objectives on a topic by topic basis) where it is notable by absence. In appendix one (p 10) the only reference to the historic environment is to maintaining and enhancing the character of natural and man-made landscapes. CBMDC's World Heritage site, the nationally important scheduled ancient monuments, listed buildings, conservation areas and regionally important sites that PPG16 says should be preserved, are not considered, let alone the rest of the historic environment which may need recording in advance of development. We would strongly urge that the impact of the historic environment is considered in any future draft of this document</p>	<p><b>West Yorkshire Archaeology Advisory Service</b></p>
<p>An additional economic objective to '<i>support collaboration between educational establishments, businesses and industry</i>' should be added in the <b>Initial Sustainability Appraisal</b> in order to achieve a more balanced approach to economic impacts.</p>	<p><b>Yorkshire Forward</b></p>

## ENGAGEMENT PLAN

COMMENT	ORGANISATION
<p><b>Engagement Plan P18</b> List of general and other Consultees-please add the West Yorkshire Archaeology Advisory Service to this list. We receive partial funding from the CBMDC to provide advice on the historic environment</p>	<p><b>West Yorkshire Archaeology Advisory Service</b></p>





Produced by the  
City of Bradford Metropolitan  
District Council

Local Development  
Framework Group

December 2007

